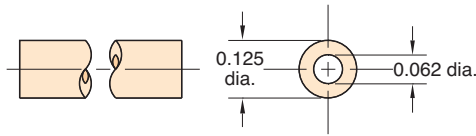
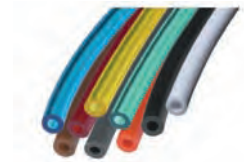




HOSE & TUBING

1/16" I.D. 85A Polyurethane Hose



Working Range: 0 to 105 psig at 100°F Maximum 120°F

Static Burst Pressure: Over 500 psig at 70°F

Color: Solid: Black, brown, white, gray, orange
Translucent: Clear, blue, green, red, yellow

Lengths Available: 50' and 500'

Bend Radius: 3/16"

Note: In normal application hose clamps are not required with hose when used with Clippard hose barb fittings

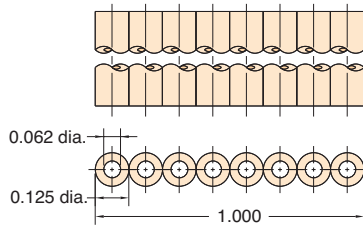
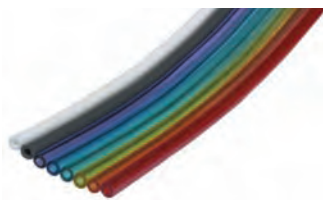
Part No.

[URH1-0402-□-□](#)

Note:

Specify color on order, and use full product number (including code letters for color) as shown in Price List. If no color is specified, clear will be furnished.

1/16" I.D. 85A Polyurethane Ribbon Hose



Type: Flexible, durable urethane hose

Working Range: 0 to 105 psig at 100°F maximum 120°F

Static Burst Pressure: Over 500 psig at 70°F

Color: Solid: Gray, white

Translucent: Blue, green, orange, purple, red, yellow

Lengths Available: 50'

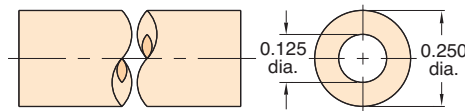
Bend Radius: 3/16"

Note: In normal application, hose clamps are not required with hose when used with Clippard hose barb fittings

Part No.

[URH8-0402-02T-050](#)

1/8" I.D. 85A Polyurethane Hose



Working Range: 0 to 105 psig at 100°F Maximum 120°F

Static Burst Pressure: Approximately 425 psig at 70°F

Color: Solid: Black, brown, white, gray, orange
Translucent: Clear, blue, green, red, yellow

Lengths Available: 50' and 500'

Bend Radius: 3/8"

Note: In normal application hose clamps are not required with hose when used with Clippard hose barb fittings

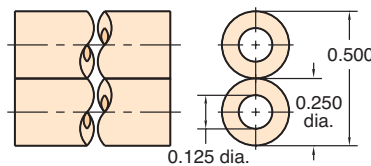
Part No.

[URH1-0804-□-□](#)

Note:

Specify color on order, and use full product number (including code letters for color) as shown in Price List. If no color is specified, clear will be furnished.

Twin 1/8" I.D. 85A Polyurethane Hose



Working Range: 0 to 105 psig at 100°F

Static Burst Pressure: Approximately 425 psig at 70°F

Color: Solid: Gray and black combination

Lengths Available: 50' and 500'

Bend Radius: 3/8"

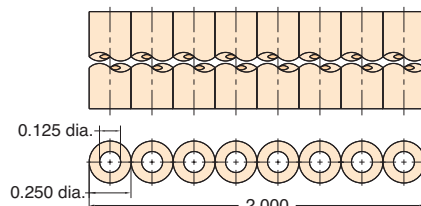
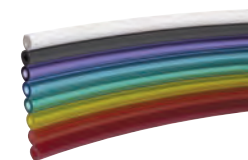
Use: Ideal for feeding supply in on one line and out on the other; reduces labor; makes neat assembly; may be parted with any sharp cutting edge

Note: In normal application, hose clamps are not required with URH2-0804-01S hose when used with Clippard hose barb fittings

Part No.

[URH2-0804-01S-□](#)

1/8" I.D. 85A Polyurethane Ribbon Hose



Type: Flexible, durable urethane hose

Working Range: 0 to 105 psig at 100°F maximum 120°F

Static Burst Pressure: Over 500 psig at 70°F

Color: Solid: Gray, white

Translucent: Blue, green, orange, purple, red, yellow

Lengths Available: 50'

Bend Radius: 3/8"

Note: In normal application, hose clamps are not required with hose when used with Clippard hose barb fittings

Part No.

[URH8-0804-02T-050](#)